



## DR-PRO RACK DMX Recorder

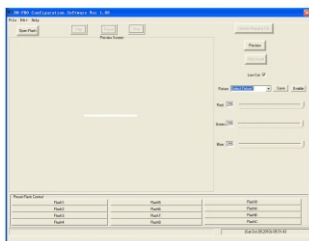
### FEATURES

- 128x160 pixels color LCD display
- Up to 8 memories with individual Master setting allows users to assign Scenes, Chases or Shows.
- Consisting of 5 operation modes: Manual control, Real-time triggering, SMPTE/MIDI time code triggering, DMX triggering and DMX monitor
- Over 5 hours recording time for Show and up to 4 different recording modes available, including Manual, Auto, Semi-Auto and Smart
- Allows to record SCENE, create CHASE and set Fade time & Hold time for every step of the CHASE.
- Allows to use PC software to record DMX data.
- Allows to use onboard display and buttons to record DMX data.
- Capability of linkup with X-KP III
- Password lock function
- 3pin XLR DMX male/female connector, SD card port, USB port, 3pin SMPTE port and 5pin MIDI input
- External Dry Contact available
- Allows users to update the firmware via USB port.

### SPECIFICATION

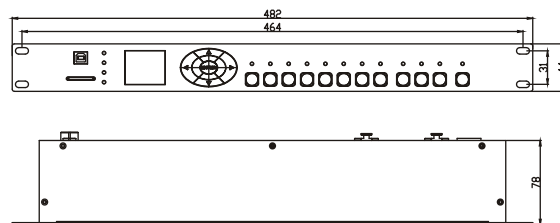
<b>POWER INPUT</b>	DC9-12V, 500mA Min
<b>CONNECTOR</b>	3-pin XLR connectors for DMX in/out
	USB port for communicating with PC
	3pin SMPTE input, 5pin MIDI input
<b>LCD DISPLAY</b>	128x160 pixels
<b>COMPLIANT PROTOCOLS</b>	Standard DMX-512(1990) and NCW DMX-1000K(1M) protocol compatible
<b>HOUSING</b>	Metal sheet with powder finishing
<b>LISTING</b>	CE certified
<b>INGRESS PROTECTING RATING</b>	IP20
<b>OPERATING TEMPERATURE</b>	-10 degC to +50 degC
<b>STORAGE TEMPERATURE</b>	-20 degC to +70 degC
<b>DIMENSIONS</b>	482(L) x 78(W) x 44(H)mm
<b>WEIGHT</b>	1.1kg

### SOFTWARE



To record DMX data via DR-PRO configuration software.

### PHYSICAL DIMENSIONS



\*\* All rights reserved. Improvement and changes to specifications, design and all contents in this catalog, may be made at any time without prior notice.

# DR-PRO RACK

## ► SYSTEM CONNECTION (linkup with X-KP III)

DR-PRO Rack can link up multiple X-KP III units and X-KP III features the function of panel extension. Taking a hall with several doors for example, X-KP III unit next to each door is able to control all LED device in the hall.

