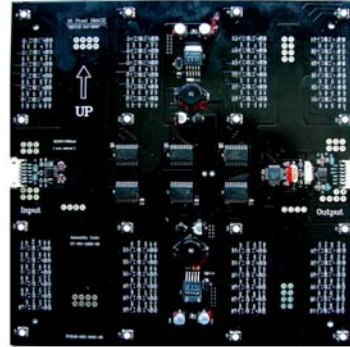


# LED Lighting



## X-Puzzle-Image

16 high intensity SMD LEDs

### ► FEATURES

- Controllable color mixing
- Average 50,000 hours life time
- Auto DMX Addressing
- Standard DMX-512A or DMX-1000K(1M) control compatible
- Ability of up to 40pcs(640pixels) X-Puzzles can be connected per DMX-1000K  
Ability of up to 10pcs(160pixels) X-Puzzles can be connected per DMX-512A

### ► SPECIFICATION

<b>COLOR RANGE</b>	16.7 million (24bit)						
<b>PIXEL DISTANCE</b>	2.5" / 63.5mm						
<b>LIGHT SOURCE</b>	16 high intensity SMD LEDs						
<b>SOURCE LIFE</b>	50,000 hours under normal operating conditions						
<b>OPERATING VOLTAGE</b>	24VDC						
<b>LED TYPE</b>	Full color 5050 SMD						
<b>POWER CONSUMPTION</b>	6W						
<b>CURRENT CONSUMPTION</b>	250mA						
<b>EMISSION WAVE LENGTH</b>	Red		Green		Blue		I <sub>F</sub> =20mA
	Min.	Typ.	Min.	Typ.	Min.	Typ.	Unit
	626	629	518	522	469	472	nm
<b>LUMINOUS INTENSITY (6.87M)</b>	62.39 (lm)						
<b>VIEWING ANGLE</b>	113°						
<b>FORWARD VOLTAGE</b>	Red		Green		Blue		I <sub>F</sub> =20mA
	Min.	Typ.	Min.	Typ.	Min.	Typ.	Unit
	1.6	1.9	3.0	3.2	3.0	3.2	V
<b>POWER DISSIPATION</b>	Red: 70mW   Green: 90mW   Blue: 110mW						
<b>CONNECTION PROTOCOL</b>	DMX-512A or DMX-1000K(1M) compatible						
<b>CONNECTION</b>	6-pin terminal						
<b>HOUSING</b>	PCB type						
<b>OPERATING TEMPERATURE</b>	-10° C ~ +50° C						
<b>STORAGE TEMPERATURE</b>	-20° C ~ +70° C						
<b>DIMENSION</b>	203(L) x 203(W) x 15(H)mm / 8"(L) x 8"(W) x 0.59"(H)mm						
<b>WEIGHT</b>	120g						

# X-Puzzle-Image

## PHOTOMETRIC DATA

Light source specifications

Optics: /  
 Light source: 16 high intensity LEDs  
 Beam angle: 113 deg  
 Light distribution: symmetric direct illumination

### Illuminance

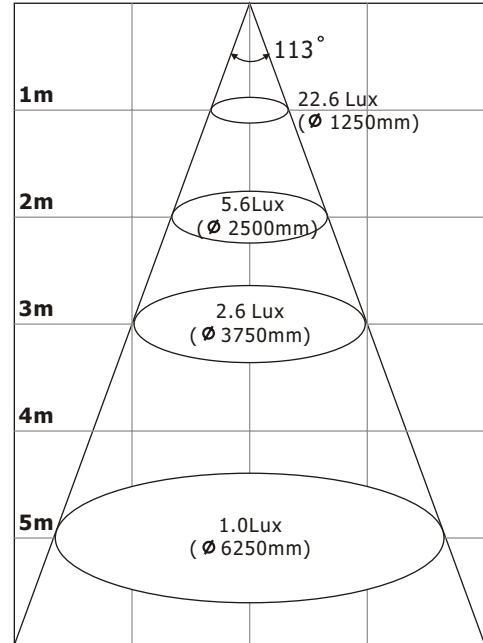
COLOR	1m		2m		3m		5m	
	Lux	Size (mm)	Lux	Size (mm)	Lux	Size (mm)	Lux	Size (mm)
<b>RED</b>	7	1264	1.8	2528	0.8	3792	0.2	6320
<b>GREEN</b>	14.8	1268	3.6	2536	1.6	3804	0.6	6340
<b>BLUE</b>	1.8	1260	0.4	2520				
<b>WHITE</b>	22.6	1250	5.6	2500	2.6	3750	1.0	6250

\* light pattern indicates the size at 50% of peak intensity

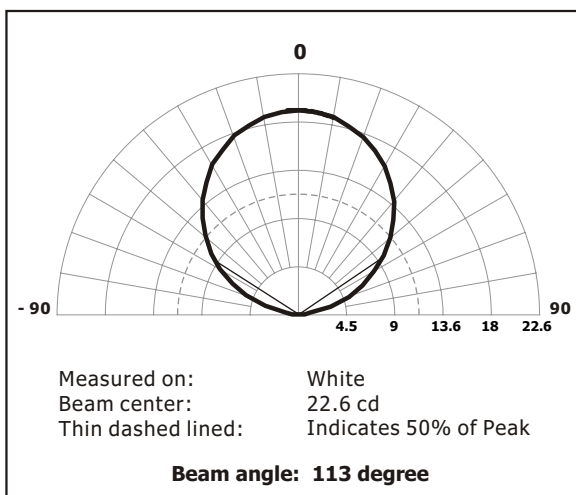
### Light output

COLOR	Total (lumens)	Power(watts)	Efficacy(lm/W)
<b>RED</b>	19.17	2.5	7.668
<b>GREEN</b>	40.1	2.5	16.04
<b>BLUE</b>	5.08	2.5	2.03
<b>WHITE</b>	62.39	6.1	10.2

### Full intensity in white color

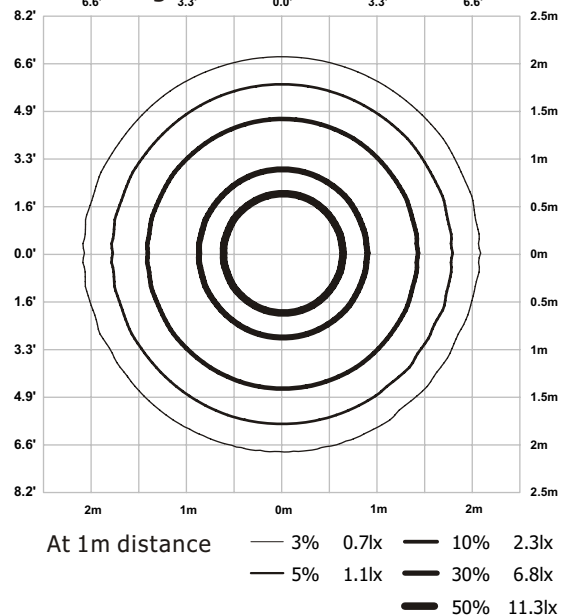


### Light distribution



IES file is also available

### Isolux diagram



\*\* All rights reserved. Improvement and changes to specifications, design and all contents in this catalog, may be made at any time without prior notice.



